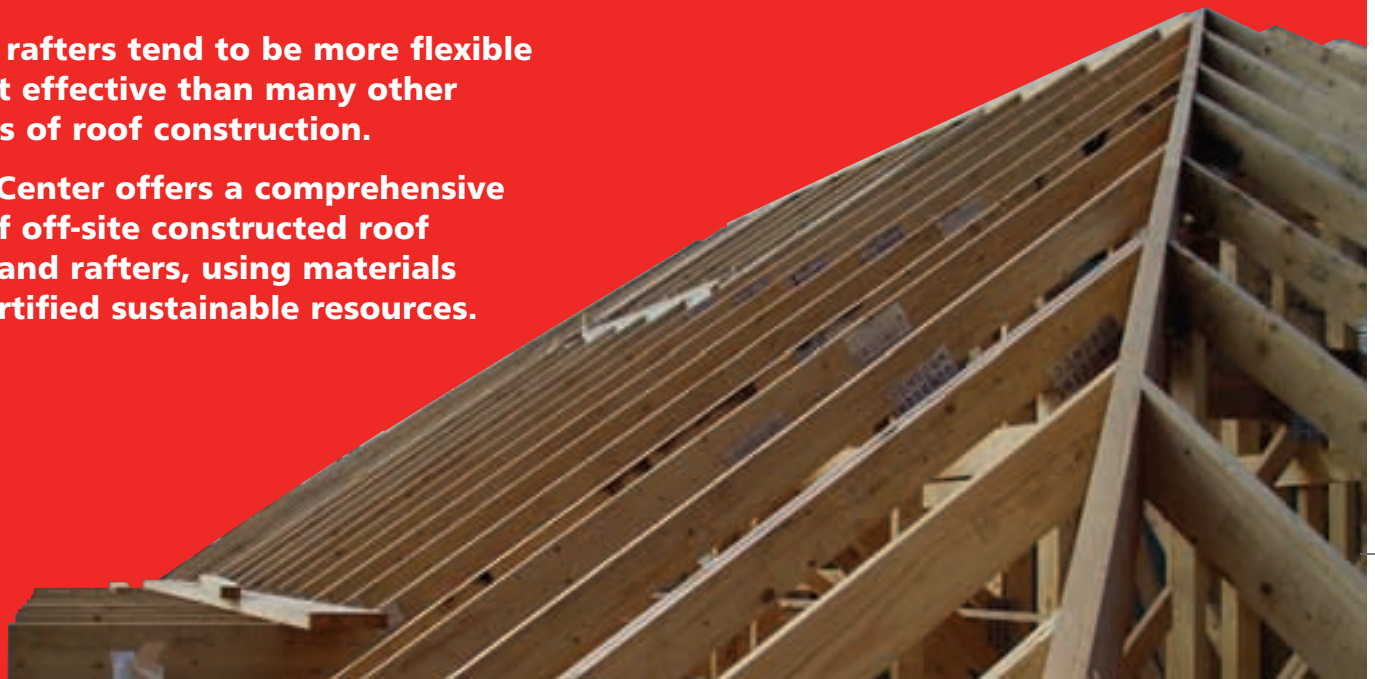


# Trussed Rafters



**Trussed rafters tend to be more flexible and cost effective than many other methods of roof construction.**

**Timber Center offers a comprehensive range of off-site constructed roof trusses and rafters, using materials from certified sustainable resources.**



## The benefits of using trussed rafters

- Suitable for a wide range of roof structures
- Speed of construction allows just-in-time delivery to site and a fast follow on for other trades
- Space saving - no on-site storage area required
- Prefabricated components mean reduced on-site labour costs
- Up to 40% more energy efficient than traditional construction methods
- More thermally efficient than alternative materials such as aluminium, steel or concrete
- Timber construction - the only truly renewable building resource
- Minimal environmental impact from installation
- Technical manufacturing process reduces emissions and pollution

## Construction

Timber Center roof structures are designed using the latest computer design programs and can be supplied, inclusive of all timber ancillary components and builders metalwork required to complete the structure.

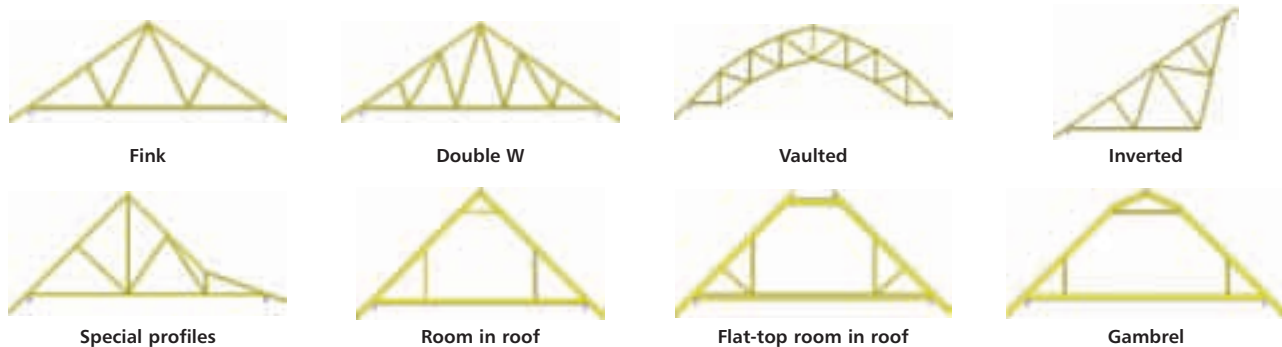
## ✓ Preservative treatment

If required roof components can be preservative treated to the latest environmentally friendly standards.

## ✓ Trussed rafter profiles

The following are just a selection of the most popular configurations available. Many others are available - just ask our timber specialists for more information.

Please note that the configurations shown are not intended to be solutions to specific design requirements and some types may not be suitable for certain span conditions.



## ✓ Design services

We are able to offer a design service that provides engineered roof and I-beam floor solutions, to meet the demands of the most complex structures.

## ✓ Delivery to suit your needs

We can provide a flexible delivery service with experienced drivers.

## ✓ Quality built-in

Timber Center's fabrication facilities allow accurate and high quality manufacture with BM TRADA ISO 9001 compliant quality assurance.



For more information or details of your nearest Timber Center

call: **0800 529 529**

or visit **[www.timbercenter.co.uk](http://www.timbercenter.co.uk)**



a WOLSELEY company

For further information telephone 0800 529 529 or visit our website at [www.timbercenter.co.uk](http://www.timbercenter.co.uk). All products featured in this publication are subject to availability and may vary at participating branches. Prices and information contained in this publication are considered to be correct at the time of going to print, but Build Center reserve the right to change those prices and information at any time without notice. Pictures and photographs are used for approximate representation only. E&OE.

Ref: 5378

**for a job well done**